

East Riding of Yorkshire Council Parish Transport Champions Project



The East Riding of Yorkshire



Large Rural Unitary

77 parishes < 500 residents

90% Bus Network

Commercial
90 Supported Bus Contracts

3 CT Operators – DRT

Limited demand outside inter-urban
routes

The Council's Statutory Duties

- **General duty:**
 - It must act fairly, rationally and within the law.
- **Specific public transport duty:**
 - Secure public passenger transport services as the Council consider appropriate to meet unmet need which would not otherwise be met.
 - Implement relevant policies in the LTP
 - Have regard to Equality duty
 - Have regard to climate change.

Parish Transport Champions – What were our key aims?

Encourage parishes to nominate a 'Transport Champion' & assess local

Ensure parishes were aware of existing services and the council's role/duties

Support Champions to gather information about current unmet
transport needs

Explain the bus service review process

How did we deliver our aims?

Six Parish Transport Events to explain our aims and **recruit** Transport Champions

We met with **protected groups** to discuss their specific transport needs

We held Training sessions for **Champions** and provided ongoing technical support

We helped Champions to design & produce **local surveys** (printed/online) and analysed results

Kilham

LOCAL TRANSPORT SURVEY



If you have any queries please contact:

Telephone (01262) XXXXXX

Email XXXXXXXXXXXXX

Kilham Parish Council is working with East Riding of Yorkshire Council to assess unmet transport needs in our village.

To help us do this, we would be grateful if you and other members of your household could complete this Survey Form.



ABOUT YOUR HOUSEHOLD MEMBERS

1 Your age(s) 0-18 19-30 31-50 51-65 Over 65

(please enter the appropriate number of people in the relevant boxes)

2 How many cars, vans, motorcycles or mopeds does your household have access to?

(please enter the appropriate number in the relevant boxes)

Cars Vans Motorcycles or Mopeds

3 Do any members of your household use existing public or community transport services?

Yes No If yes, please indicate which service(s) they use:

I24 Bus MEDIBUS MiBUS

4 If members of your household use the I24 bus service or MiBUS please answer the following questions:

What is your most common destination? _____

How did you find out about bus times? _____

Are you happy with current bus times and service patterns Yes No

If no what changes would make the service more suitable for your particular needs?

PLEASE TELL US MORE ABOUT YOUR LOCAL TRANSPORT NEEDS - see the example highlighted in red

Place or activity you want to get to	Household Member Details	Destination (including any onward travel links required)	What day(s)	Departing from Kilham	Arriving at Kilham
Shops or supermarket	Female 18	Driffield (to travel onwards by bus or train to Hull)	Saturday	9 - 10am	5 - 6pm
Employment opportunities					
Health or medical services					
Social or leisure activities					
Other (please specify)					

Thank you for completing this survey. If you would like us to contact you about any new or improved transport services we may be able to develop please give your main household contact details here:

Name Telephone number

Address

Postcode Email



All information you provide will be kept strictly confidential. We will be calling to collect completed surveys on XXXXXXXXXX. Alternatively please hand your completed form to the central collection point.

What were the outcomes?

We recruited 78 Transport Champions

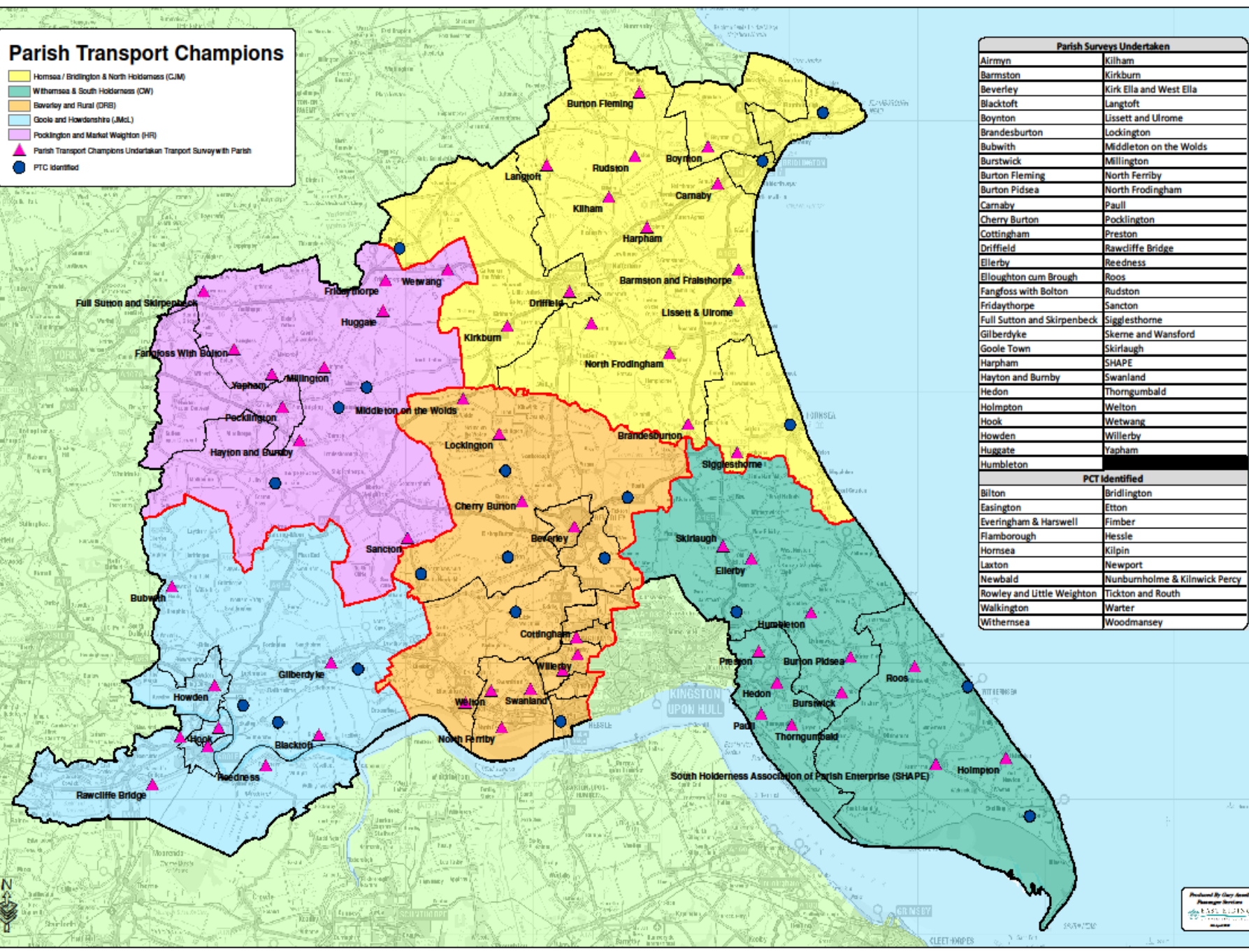
We secured 3,398 responses to local transport needs surveys

We analysed responses and produced summary reports for each parish

We mapped patterns of need and fed this into our supported bus review process

Parish Transport Champions

- Hormsa / Bridlington & North Holderness (CJM)
- Withernsea & South Holderness (CW)
- Beverley and Rural (DRB)
- Goole and Howdenshire (JML)
- Pocklington and Market Weighton (HR)
- Parish Transport Champions Undertaken Transport Survey with Parish
- PTC Identified



Parish Surveys Undertaken	
Airmyn	Kilham
Barnston	Kirkburn
Beverley	Kirk Ella and West Ella
Blacktoft	Langtoft
Boytton	Lissett and Ulrome
Brandesburton	Lockington
Bubwith	Middleton on the Wolds
Burstock	Millington
Burton Fleming	North Ferryby
Burton Pidsea	North Frodingham
Camaby	Pauli
Cherry Burton	Pocklington
Cottingham	Preston
Driffild	Rawcliffe Bridge
Elerby	Reedness
Eloughton cum Brough	Roos
Fangfoss with Bolton	Rudston
Fridaythorpe	Sancton
Full Sutton and Skirpenbeck	Siggleshorne
Gilberdyke	Skerne and Wansford
Goole Town	Skirlaugh
Harpham	SHAPE
Hayton and Burnby	Swanland
Hedon	Thornumbald
Holmpton	Welton
Hook	Wetwang
Howden	Willerby
Huggate	Yapham
Humbleton	
PTC Identified	
Bilton	Bridlington
Easington	Etton
Everingham & Harswell	Fimber
Flamborough	Hessle
Hormsa	Kilpin
Laxton	Newport
Newbald	Nunburnholme & Kilnwick Percy
Rowley and Little Weighton	Tickton and Routh
Walkington	Warter
Withernsea	Woodmansey



How will this project influence future network development?

- ERYC needs to save £60 million over the next 4 years
- All services areas are tasked with making savings
- The PTC project will help us to re-model our rural transport network
- We will aim to make it more cost-effective while maintaining essential connectivity
- Champions will help us to work with parish clusters and establish 'community bus partnerships'

The Bus Network Review

Utilised the transport needs assessments

Combined these with a rigorous analysis of current supported bus contracts

Produced a detailed and balanced proposal for consultation

Undertook extensive public consultation with assistance from local Champions

On the web, at venues, on the road..



Contract	Service	Contractor	Annual Passenger Journeys	Score	Subsidy per Single Journey	Score	Journey Purpose (Social Need)	Score	Average Passengers per Journey	Score	Proximity of Alternative Services	Score	Environmental Effect CO2 (Kg)	Score	Total Score
PT659	75 Withernsea - Hull (Burstwick Diversion)	EYMS	295	20	£2.34	6	Rural Sunday	20	1	6	Substantially Similar	50	-0.31	2	104
PT685	2 Bubwith - Market Weighton	Thornes	549	20	£8.35	15	Rural Shopping (Off Peak)	6	5	6	Substantially Similar	50	0.27	-1	96
PT703	121 Nafferton - Leconfield	EYMS	529	20	£11.50	15	Rural Work (Peak)	1	2	6	Substantially Similar	50	-1.43	2	94
PT704	121 Driffield - Bridlington	EYMS	738	20	£12.37	15	Rural Work (Peak)	1	2	6	Substantially Similar	50	-0.74	2	94
PT667	105 Cottingham The Lawns - Hull	EYMS	5534	10	£0.35	1	Urban Sunday	25	24	2	Substantially Similar	50	0.91	-1	87
PT689	46 Pocklington - York	EYMS	5857	10	£1.72	4	Rural Sunday	20	10	5	Substantially Similar	50	5.04	-3	86
NLC1	350 Hull - Scunthorpe	EYMS	3928	10	£0.82	1	Urban Evening	19	6	5	Substantially Similar	50	1.11	-1	84
PT306	9 Hull - Bricknell Avenue - Cottingham	Stagecoach Hull	TBC	1	£0.06	25	Urban Shopping (Off Peak)	7	TBC	1	Substantially Similar	50	0.3	-1	83
PT626	517 Bridlington - New Pasture Lane	EYMS	1959	15	£3.42	6	Urban Work (Peak)	2	6	5	Substantially Similar	50	-0.04	2	80
PT661	80 Hull - Hedon - Hull (Westlands Estate Diversion)	EYMS	9907	15	£0.68	1	Urban Shopping (Off Peak)	7	19	3	Substantially Similar	50	0.28	-1	75

Case Study - Burton Pidsea BTG

Commercial Operator withdrew peak service to Hull – public outcry

80 attended public meeting

Agreed to form a 'Better Transport Group' and assess current local needs

Found substantial unmet need for an off - peak bus link to the town of Hedon

Community Bus 3 (CB 3)

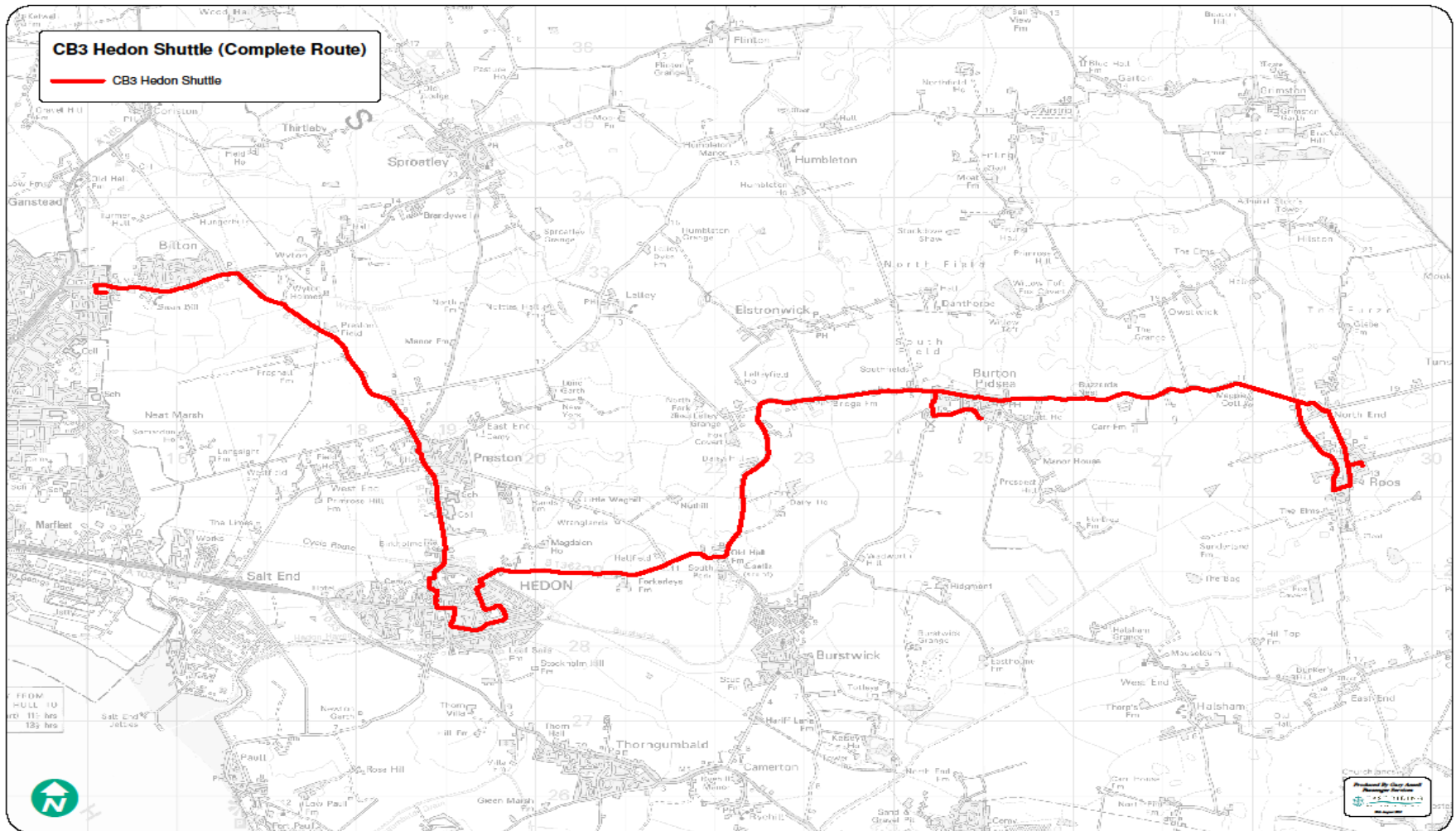
The Group secured funding for a pilot service from 2 Wind Farm Funds

A twice weekly Section 22 Community Bus Service started operation in 2016

Further funding to extend the route and the pilot period has now been secured

Passenger numbers are growing steadily

Community Bus Route 3



This map is reproduced from Ordnance Survey material with the permission of Ordnance Survey on behalf of Her Majesty's Stationery Office Crown Copyright 2013. Unauthorised reproduction infringes Crown copyright and may lead to prosecution or civil proceedings. © Crown Copyright and database right 2013. Ordnance Survey 100022383. East Riding of Yorkshire Council.

CB3

Hedon Shuttle

From Wednesday 14 September 2016 your **community bus service**, CB3 will run on **WEDNESDAYS** and **FRIDAYS** and will serve two new destinations!

Burton Pidsea • Roos • Hedon

♦ Preston (Sandhill Garden Centre) ♦ Bilton (ASDA)



Adults: £5 Return, £2.50 Single | Under 5s FREE | Under 16s Half Price
Concessionary Bus Passes will be accepted

From 14 September 2016 the CB3 will run on **Wednesdays** and **Fridays** from the villages of **Burton Pidsea** and **Roos** to **Hedon**, **Sandhill Garden Centre** at **Preston**, and **ASDA** at **Bilton**.

- Anyone can use the bus and there are several stops in each village.
- There are two return journeys on both days of operation.
- The minibus is fully accessible and can accommodate one wheelchair passenger.
- The service is timed to allow passengers wishing to travel onwards to Hull to catch the EYMS Service 76 at Hedon.

The service will be provided by local community transport group Holderness Area Rural Transport (HART). It has been organised by the Burton Pidsea Better Transport Group, who have secured funding from the Tedder Hill, Burton Pidsea and Roos Wind Farm Funds.

Use the CB3 and help us to make it a sustainable asset for our villages. It will take you into the centre of **Hedon**, to the doctor's surgeries, to the popular **Sandhill Garden Centre** at **Preston** and to **ASDA** at **Bilton**! You can also use it to connect with EYMS services to Hull and back.

For further information contact Better Transport Group Chairman, Bill Marwood by telephone 07774 767519 or email billmarwood@gmail.com

See the village timetables overleaf for full times and bus stop information →

Burton Pidsea • Roos • Hedon • Preston (Sandhill Garden Centre) • Bilton (ASDA)

CB3 Outward from Burton Pidsea on Wednesdays and Fridays

Burton Pidsea – Hedon – Preston (Sandhill Garden Centre) – Bilton (ASDA)

Burton Pidsea	Memorial Hall, Opposite Barley Garth, Opposite Phone Box, Black Bull	9.35	12.40
Hedon**	Inmans Road/Acklam Road Hail and Ride, Thorne Road Corner, St Augustine's Gate, Church View Surgery	10.05	1.00
Preston	Sandhill Garden Centre	10:15	1.10
Bilton	ASDA	10:25	–

CB3 Return to Burton Pidsea on Wednesdays and Fridays

Preston (Sandhill Garden Centre) – Bilton (ASDA) – Hedon – Burton Pidsea

Bilton	ASDA	11:45	–	–
Preston	Sandhill Garden Centre	11.55	2.15	–
Hedon	Thorne Road Corner, St Augustine's Gate, Church View Surgery, Inmans Road/Acklam Road	12.05	2.25*	4.20
Burton Pidsea	Memorial Hall, Opposite Barley Garth, Opposite Phone Box, Black Bull	12.25	–	4.40

CB3 outward from Roos on Wednesdays and Fridays

Roos - Hedon - Preston (Sandhill Garden Centre) - Bilton (ASDA)

Roos	North End, Post Office, Eastfield Estate, Lamb Lane	9.45	12.40
Hedon**	Inmans Road/Acklam Road Hail and Ride, Thorne Road Corner, St Augustine's Gate, Church View Surgery	10.05	1.00
Preston	Sandhill Garden Centre	10:15	1.10
Bilton	ASDA	10:25	–

CB3 return to Roos on Wednesdays and Fridays

Bilton (ASDA) - Preston (Sandhill Garden Centre) - Hedon - Roos

Bilton	ASDA	11:45	–	–
Preston	(Sandhill Garden Centre)	11.55	2.15	–
Hedon	Thorne Road Corner, St Augustine's Gate, Church View Surgery, Inmans Road/Acklam Road	12.05	2.25*	4.20
Roos	North End, Post Office, Eastfield Estate, Lamb Lane	12.30	–	4.50

* Drops of at Thorne Road Corner only. No onward service to Burton Pidsea and Roos until 4.20.

** Seat availability dependant on passenger numbers on board when the service reaches Hedon from Burton Pidsea and Roos – driver will advise.

Please note there is only one return journey to ASDA depart Hedon at 10.05 return from ASDA at 11.45.

For onward connection to Hull Interchange catch the EYMS 76 from Thorne Road Corner at 10.30 (arrives at Hull 11.01). For return connection catch the 3.45 EYMS 77 from Hull Interchange (arrives Thorne Road Corner 4.11). CB3 will wait if the 3.45 EYMS 77 from Hull is delayed.

CB 3 – passenger data

